

# ClePD: The Journey

1996-2011

- in four large strides.

- Policy & policy makers
- Partnerships
- Funding



- Technology transformed and transforming

# 1996 PADSHE

- **Policy: early 90s TQA**  
**elite → mass HE – transparency**
- **Funding:**  
**HEFCE FDTL**

## **Partners: Other HEIs**

Nottingham, Birmingham

Newcastle, Liverpool John Moores

Northumbria, City

Reading



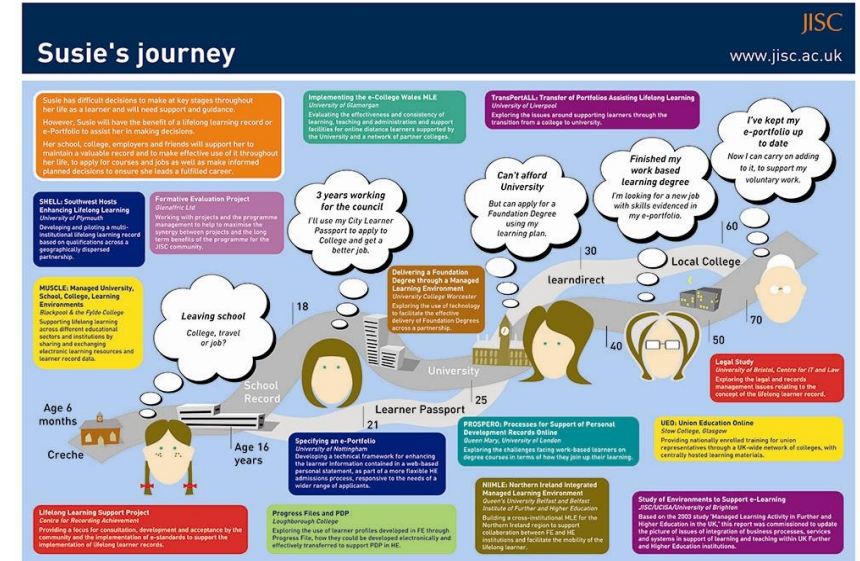
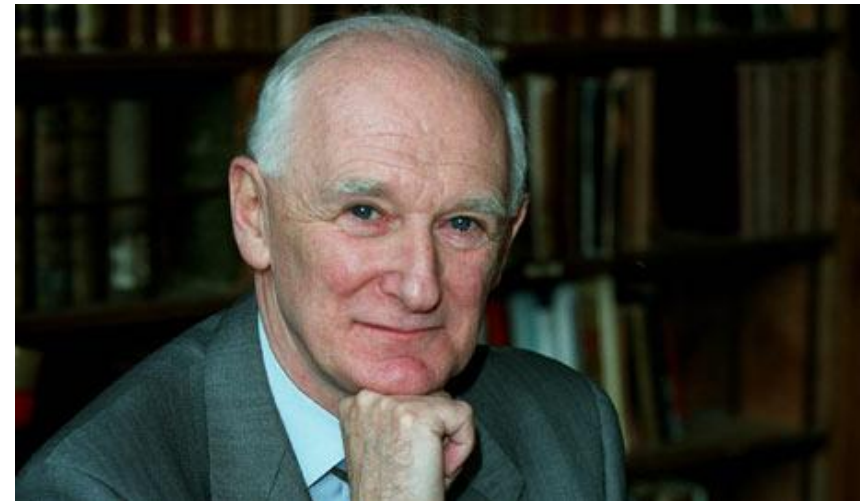
# Emerging concepts

- Technology: paper
- Personal and Academic Records
- Tutor-student data sharing
- Dual-purpose records – repurposing data
- Joining up ‘systems’ – learning and admin



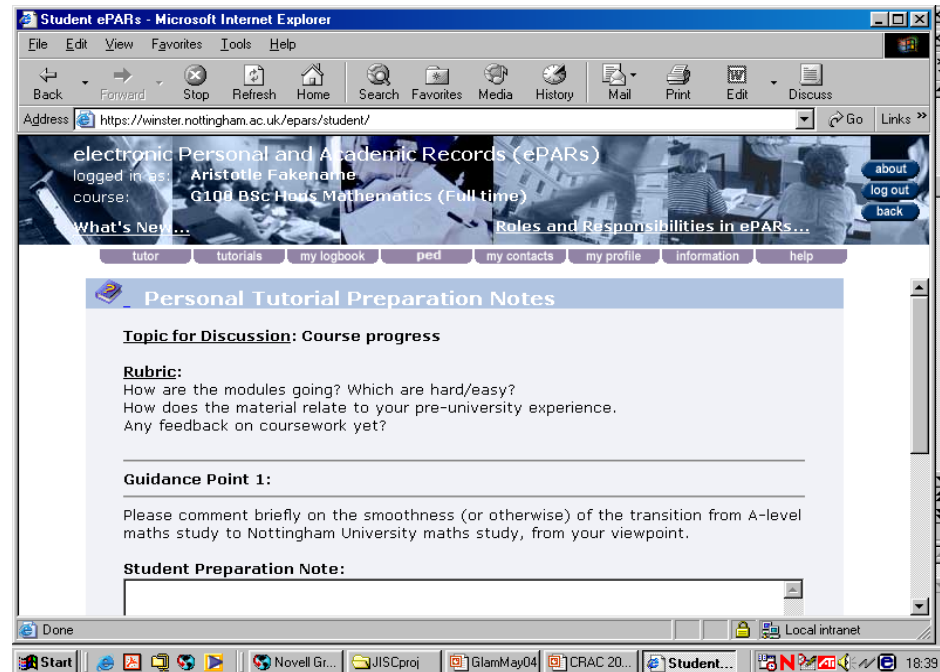
# Implementing Dearing 1997-2004

- Widening participation, employability & lifelong learning
- Partners: Schools, FE, professional bodies (TTA) regional networks
- Funding: DfES, DfEE, JISC
- Internet-PARs 2
- RIPPLL



# Managing progression

- City of Nottingham Passport → UoN ePARs
- Joining up systems for lifelong learning:  
data moving  
between systems  
by 'pass the  
parcel' transfer  
- UKLeap



# Schwartz, Tomlinson, Leitch, LLNs 04-08

- Fair Admissions, Diplomas and the upskilling of the adult workforce



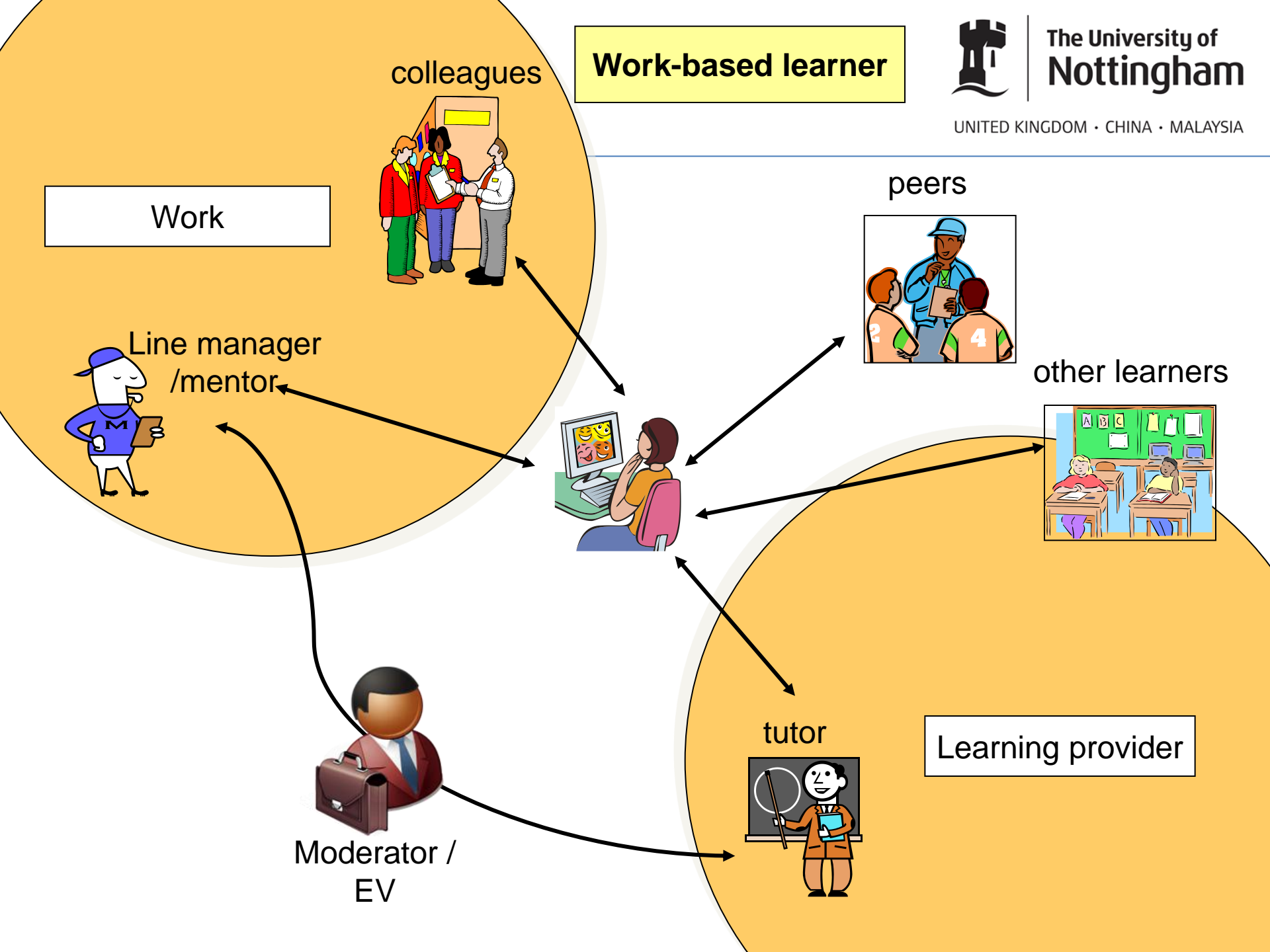
- Partners: UCAS, other HEIs, FECs; Nottingham Passportfolio; Connexions; SSCs; vendors. Europe – workforce development/citizenship
- Funding: JISC, HEFCE → ADoM & DELIA; regional technology for LLL + XCRI interop.

# Learners central in a wider world

- Holistic approach to learners, personalisation, multi-locational learning institution-free eportfolios
- Technologies:
  - JISC eFramework
  - distributed data
  - thin clients
  - web services



# Work-based learner

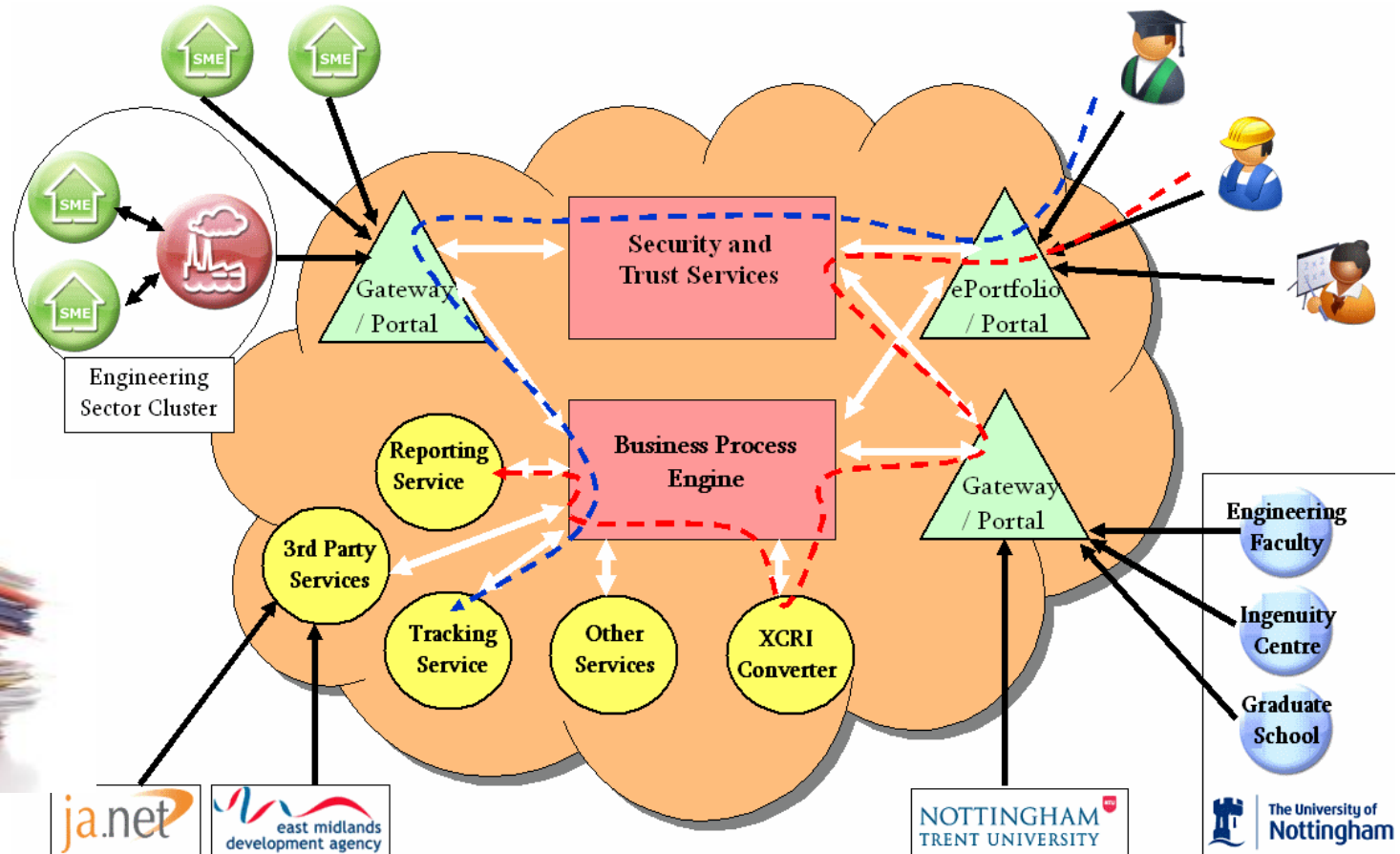




# NSS; Student Experience; Browne 2007--

- Lifewide learning – broader concepts of learning; employability, employer engagement, fees, fair access
- ClePD partnerships diversifying: HE staff – further categories: IAG, Community, BDOs; students; employers; regional organisations
- Funding in the downturn – diversification trajectory: JISC and EU projects, consultancy, internal commissions, commercialisation

# ClePD: The Trajectory



\* The system will support services from relevant 3rd parties